

CERTIFICATE OF LOCATION OF GOVERNMENT CORNER

NORTH QUARTER Corner of Section 21, Township 105, Range 43, 5TH P.M.

STATE OF MINNESOTA, County of MURRAY

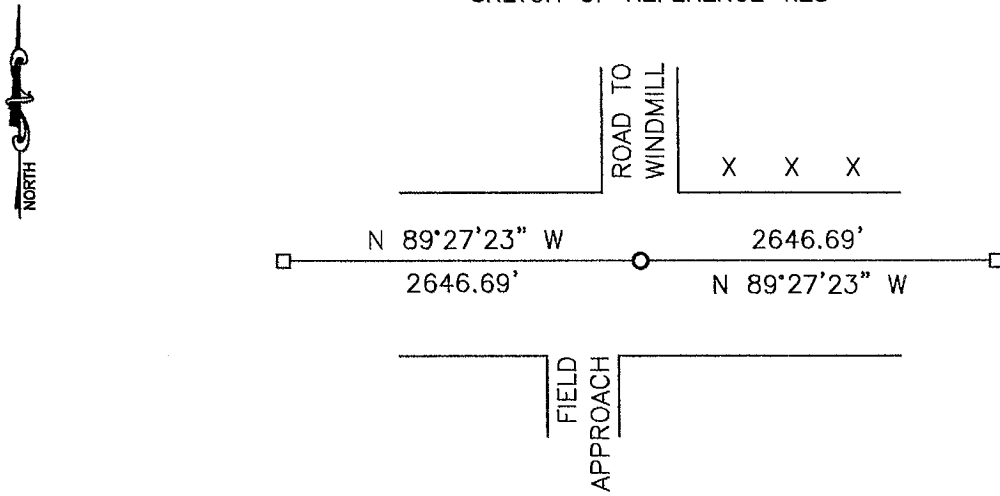
At the corner location shown on the sketch:

On _____ found a _____
DATE

left monument as found, lowered monument, removed monument (explain)

On 10-21-2008 placed a 1" PIPE WITH SEAL #43844
DATE

SKETCH OF REFERENCE TIES



Minnesota State Plane Coordinate
System Murray County Datum
NAD83 (1996)

N: 116274.903
E: 434751.253

Statement of evidence relative to this corner location is on back of page.

I hereby certify that this document and the data contained herein was prepared by me or under my direct supervision.

[Signature] 3/5/09
SIGNATURE DATE

Registration No. 43844

Land Surveyor, Professional Engineer
 County Surveyor, County Engineer

OFFICE OF THE COUNTY RECORDER

County of _____

I hereby certify that this document was filed in the Co. Recorders office at _____ .M on the _____ day of _____ A.D. 20 _____

County Recorder James V. Johnson
By _____, Deputy

DOCUMENT NO. JUL 10 2009

Statement of Evidence

In 1866, J. W. Bishop did the original subdivision of the township.

On June 19, 1913, a stone was recorded at the corner.

In 1940, a concrete stone was recorded at the corner.

On October 21, 2008, Bueltel-Moseng Land Surveying dug with a backhoe. We found pieces of wood 5'± below the road surface, but did not find anything else. We set a 1" pipe with seal #43844 midway and on line between the section corners. It fell in the center of the road to the north and 2'± north of the east-west road.